



THE SPINNEY

Haywards Heath, West Sussex



Welcome

This exceptional property offers the perfect blend of modern luxury, practicality, and natural beauty, making it an ideal family haven.

The house is beautifully set back from the road, providing privacy and a charming curb appeal. As you step inside, the spacious entrance hall welcomes you with an abundance of natural light. The high ceilings and elegant design make an immediate impression, setting the tone for the rest of the home.





Heart of the home

The heart of this home is undoubtedly the extended and fully integrated open plan kitchen and dining/family room. This inviting space features large sliding doors that open up to the south-east facing garden, which stretches over an impressive 77 feet.

The flood of natural light combined with the seamless transition between indoor and outdoor living spaces creates a perfect atmosphere for both relaxation and entertaining.



LIVE WELL

Love Much

LAUGH OFTEN

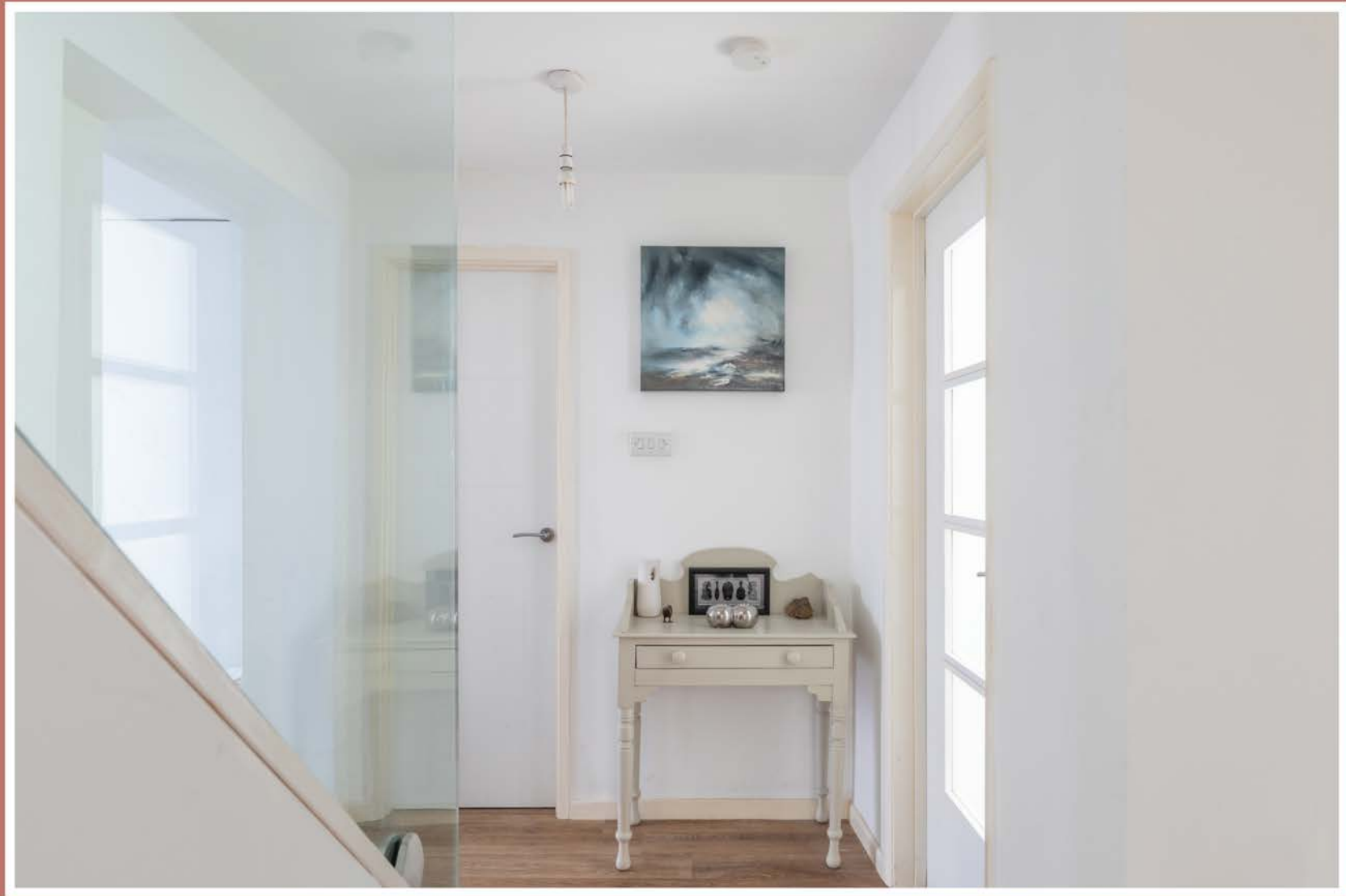




Versatile living

For cosier moments, the separate living room boasts an open fire, providing warmth and character. This room offers a more intimate setting for family gatherings or quiet evenings by the fire while enjoying views over the garden and beyond.







Step upstairs

Three double bedrooms are thoughtfully designed and generously sized, providing comfort and space for the entire family. Bright and welcoming, these bedrooms share a well-appointed family bathroom.



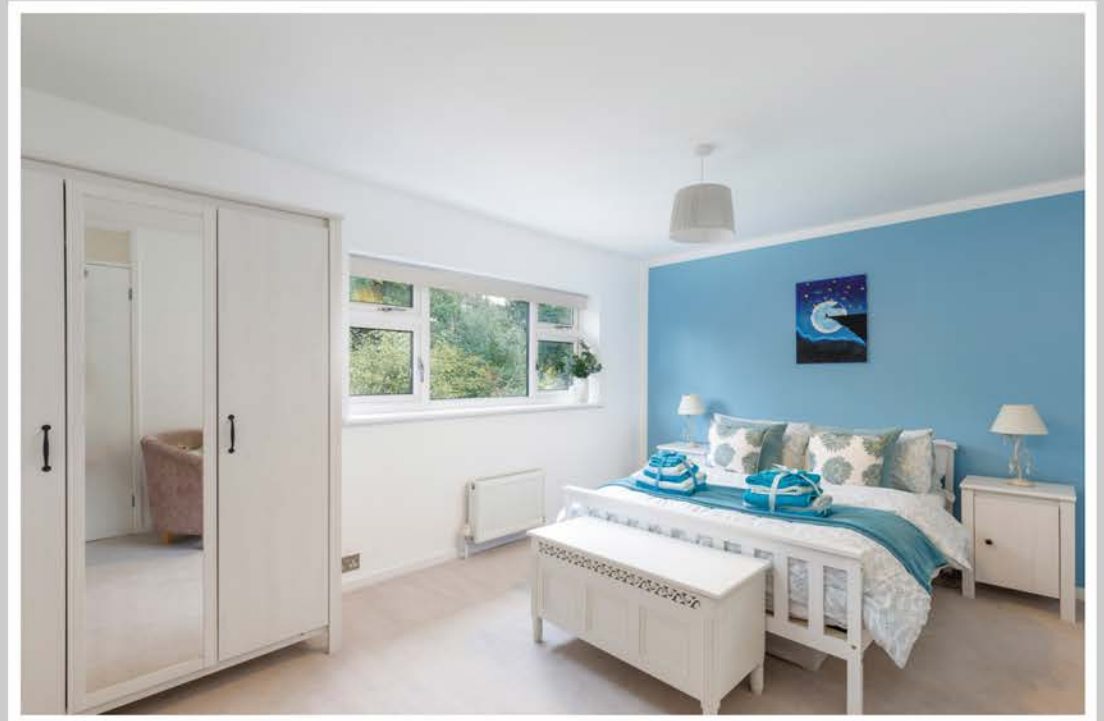
Master Suite

Wake up rejuvenated after a restful nights sleep and enjoy uninterrupted views over the woodland from the master bedroom.

The large master bedroom has ample built in wardrobe space and is complete with a stylish en-suite shower room - a personal sanctuary that offers privacy and comfort.



Stylish bedrooms



Modern bathrooms

A stylish en-suite shower room adds a luxurious finish to the master suite while the three remaining bedrooms are served by an extended family bathroom with freestanding bath and separate shower - the perfect tonic to wind away the stresses of the day.





Step Outside

The magnificent garden, extending over 77 feet and facing South East, is a true outdoor paradise. It features a wrap around decked area off the family room, perfect for al fresco dining and relaxation. Towards the rear, you'll find a covered seating area and vegetable garden behind, allowing you to cultivate your own produce.

What's more, a gate provides direct access to a wooded area, inviting you to explore and connect with nature right from your own garden. The garden shed provides additional storage for the incoming buyer.





Words From The Sellers

“We love the peacefulness of looking out into the woodland and seeing the wildlife in the garden. The open plan kitchen - when the doors are open - just seamlessly brings the outside in.

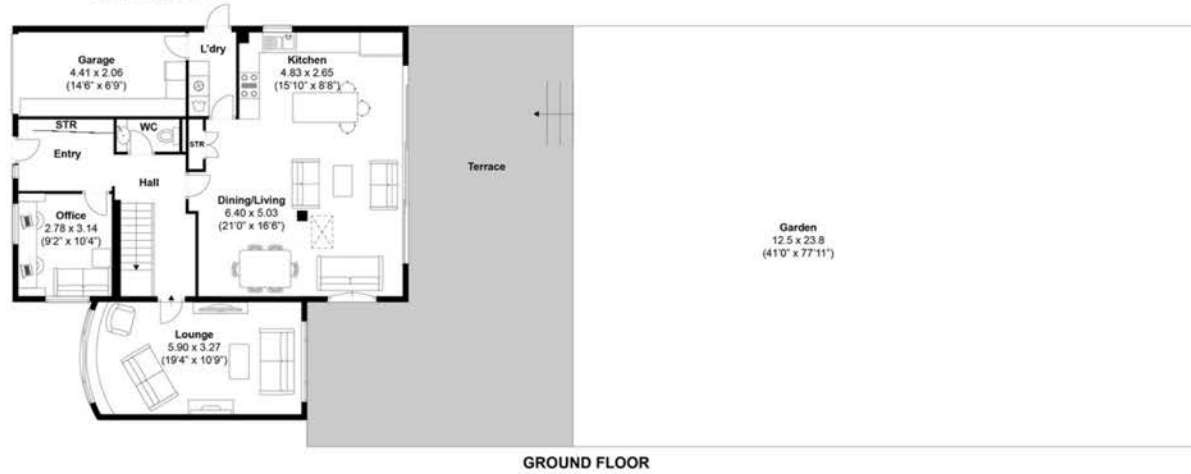
Sitting down on the outside seating area watching the sun set is just a great social place to be with friends.”

The Spinney, Haywards Heath

Approximately 188.47 sqm (2028.66 sqft)



CARROLL
ESTATE AGENTS



Disclaimer:

The measurements are approximate and are for illustration purposes only.
The dimensions are measured internally and in metres and feet. We do not take any responsibility for errors and/or omissions.
If you require further verification please discuss with the buyer/owner of the property.

The Finer Details

HOME

- Spacious family home in private close in Haywards Heath
- Superb master suite with luxurious en-suite
- Three further double bedrooms
- Bright study or 5th bedroom
- Superb open kitchen/dining and family room enjoying garden views
- Indoor/outdoor living with bi-fold doors opening to garden
- Cosy separate living room with open fire
- Integral garage & expansive driveway
- EPC rating D

GROUNDS AND LOCATION

- Established South East facing rear garden
- Wonderful countryside walks on your doorstep through private gate at rear of garden
- 5 minute to popular Harlands Primary School
- Haywards Heath station 1 mile walk
- Access to London Terminals from Haywards Heath in 44 minutes
- Gatwick Airport approximately 12 miles
- Extensive choice of state and independent schools within close proximity



CARROLL

ESTATE AGENTS

whatthreewords:///blogging.swift.tops

Proudly presenting... The Spinney. For any enquiries, please contact
Carroll Estate Agents using the below information:

info@carrollproperty.co.uk

07962 306496